



# Enterprise Architecture Services

# WHAT SETS US APART

## Lume's approach to consulting is distinct from other consulting firms in many ways:

- ❑ Lume helps organizations to focus on modelling and modifying their business processes rather than concentrating on the technology. When done correctly, it can elevate the IT department to play much more of a crucial role in the way the organization is run.
- ❑ Lume cultivates the culture of "Service-Oriented Architecture". Lume helps organizations to start Enterprise architecture (EA) as a "Business Practice" where they can drive the initiative to enable the business then engage IT to implement the necessary technology to support the business.
- ❑ Lume has a unique blend of Architecture and Strategic Analysis expertise. Our team of experienced enterprise architects, strategists and analysts help you navigate the chaos, improve performance, and achieve your visions step-by-step.
- ❑ Our experts present several sides to each issue and not only the technological aspects.
- ❑ No force-fitting at Lume – from methodology to approach to roadmap to solutions to contents, we create everything from scratch for each engagement to address the unique business challenges of our client's organization.
- ❑ No technology bias –Lume has no relationships with any technology vendors. Our technology recommendations for resolving business issues are truly derived from our industry knowledge and world-wide experience.
- ❑ Lume works with every client to custom-fit our services for the client's needs, budget, culture, and business drivers.
- ❑ Our engagements are aimed at significant knowledge transfer so clients can continue moving forward on their own and remain a strategic contributor to the success of their organization.



# Lume's Enterprise Architecture Services

## Meet today's challenges while creating a path to future growth

Today's business demands require an architecture that is highly scalable, agile, and flexible. Most organizations have an enterprise architecture that evolved ad-hoc over time and that often leads to significant inefficiencies and operating cost due to redundancies. Leveraging our expertise, we help you remediate these issues by building a program that is right for your organization.

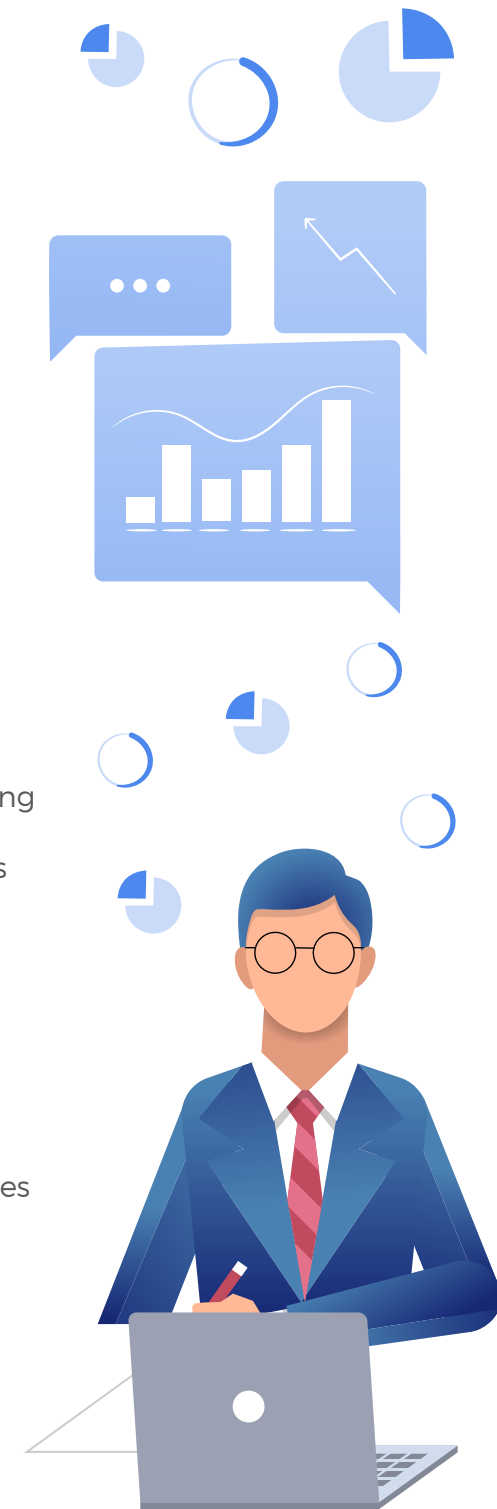
### Our Enterprise Architecture Team can help you create:

- Accelerated performance
- Reduced risk
- A stronger foundation for innovation
- Increased agility and efficiency

### Our EA services include:

#### EA Advisory

- ❑ Whether you chose to lead through innovation or operational excellence, Lume helps you build a foundation for agility, responsiveness and effectiveness. Drawing from our practice Principals and Sr. Consultants, we can provide:
- ❑ Executive mentoring designed to identify functional areas where EA principles may be beneficial, define approaches for roll-out, and provide insights into best practices
- ❑ Executive mentoring in adopting a service-oriented architecture approach
- ❑ Executive mentoring in defining a sequential and prioritized adoption strategy for enterprise capabilities that granty our organization the strategic agility it needs.
- ❑ Executive mentoring designed to establish an EA practice that supports implementing laws, regulations, and polices
- ❑ Executive advisory and training for creating, managing, leveraging, and maintaining architecture models to reflect business strategies and goals.
- ❑ Executive mentoring in risk identification and analyzing potential impact on the enterprise in achieving objectives or complying with regulatory requirements
- ❑ Executive mentoring for identifying ways to improve business and IT capabilities to support future goals and regulations
- ❑ Roadmap development for implementation and ongoing governance of the EA
- ❑ Recommendations and advice to the c-level executives with respect to policy, guidance, standards, and procedures related to the maintenance and update of the Enterprise Architecture



## EA Planning and Strategy

- Engaging with stakeholders across the organization to derive requirements
- Recommending EA strategies, processes, tools, standards, and methodologies
- Assisting in the design, development, and maintenance of the EA
- Researching and identifying solutions that support business needs
- Providing guidance on leveraging technology to support business operations
- Managing the acquisition and development of an EA management system tool

## EA Implementation and Governance

- Creating, managing, leveraging, and maintaining architecture models to reflect business strategies and goals
- Directing and implementing EA activities
- Creating improved architectural practice and promoting its adoption throughout the enterprise
- Identifying ways to reduce costs and inefficiencies across the organization
- Identifying ways to improve capabilities to support future goals
- Identifying risks and analyzing potential impact on the enterprise and on achieving objectives
- Ensuring new models and processes adhere to standards and meet requirements



## EA Training

Our EA courses are designed to give EA practitioners and leaders a framework for understanding EA, experience, and the foundation they need to build or support sustainable architecture in any business environment.

Our courses include the followings:

Training Topic	Price	Class size
<b>TOGAF Certification Preparation</b>		
TOGAF Certification Pre. : In Class	\$6,468	4 days for up to 8 persons
EA Overview: Video	\$4,914	3 days for up to 8 persons
TOGAF Certification Preparation: Video	\$715	3 days for 1 person
<b>Minimum Necessary Enterprise Architecture Elements</b>		
Business Architecture	\$8,099	3 days for up to 8 persons
Application Architecture	\$7,969	3 days for up to 8 persons
Data Architecture	\$7,969	3 days for up to 8 persons
Information Architecture	\$7,969	3 days for up to 8 persons
Technical Architecture	\$7,969	3 days for up to 8 persons
Business Intelligence Architecture	\$8,099	3 days for up to 8 persons
Security Architecture	\$8,099	3 days for up to 8 persons
Solution Architecture	\$7,969	3 days for up to 8 persons
<b>EA Capability Workshop</b>		
1 Day Workshop	\$6,994	for up to 8 persons
5 Days Workshop	\$19,396	for up to 8 persons
10 Days Workshop	\$35,932	for up to 8 persons
<b>EA in Practice</b>		
Architecture Trade-off	\$2,932	1 day for up to 8 persons
Leadership & Communication	\$2,100	1 day for up to 8 persons
Roadmap Development	\$2,932	1 day for up to 8 persons
Scenario Development	\$2,932	1 day for up to 8 persons
Stakeholder Management	\$2,932	1 day for up to 8 persons
Traceability Development	\$2,756	1 day for up to 8 persons
Workshop: Leadership	\$1,924	1 day for up to 8 persons
Workshop: Roadmap Development	\$3,276	1 day for up to 8 persons
Workshop: Scenario	\$3,276	1 day for up to 8 persons
Workshop: Stakeholder Management	\$2,756	1 day for up to 8 persons
Workshop: Traceability	\$2,756	1 day for up to 8 persons
<b>Leadership Series</b>		
Workshop: Strategic Enterprise Analysis	\$7,995	1 day for up to 8 persons
Scenario Development	\$5,415	1 day for up to 8 persons
Workshop: Roadmap Development	\$5,239	1 day for up to 8 persons
Architecture Trade-off	\$5,415	1 day for up to 8 persons



## About Us

Lume is a truly unique management consulting firm, comprising a group of locally and internationally recognized experts who have come together to offer consulting and training to our clients. Our experts delivered and are delivering C-level advise and groundbreaking work in organizations worldwide, enabling businesses to determine the course of action that best fits their unique situation.

Lume believes that the complexity of the business issues confronting corporations today demands multiple detailed perspectives from which a company can view its opportunities and risks in order to make the right strategic and tactical decisions. With Lume, you get points of view derived from the best practices and lessons learned from the world's leading experts who are implementing solutions and techniques at companies with similar complexity like yours. We offer our expertise in a variety of formats including online training, advisory services, in-person workshops and training, and consulting. We customize our training courses and consulting services for each client so you get the solutions you need.

**For more information:**  
**Contact Lume at +1 (916) 548-4161**  
[info@lumecg.com](mailto:info@lumecg.com)